

C046-

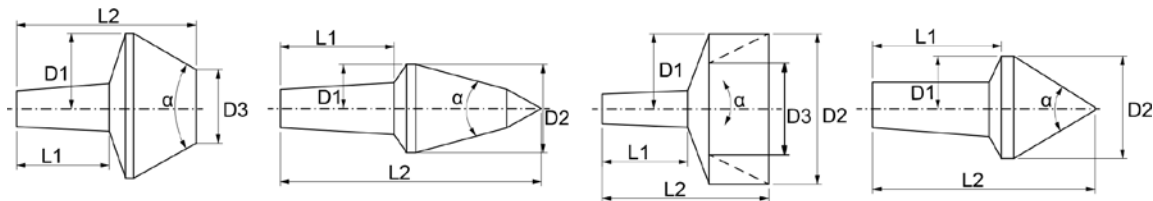
ROTARY LIVE CENTER

Art.	€	MT	Center	Body	Length
C046/2	€ 68,32	2	60°	Ø 45 mm	155 mm
C046/3	€ 82,88	3	60°	Ø 53 mm	175 mm
C046/4	€ 87,81	4	60°	Ø 63 mm	208 mm
C046/5	€ 120,96	5	60°	Ø 87 mm	256 mm



C050-

PRECISION LIVE CENTER SET



Art.	€	A	B	C	D	E	F	G	MT
C050/2	€ 164,64	L2 39 mm - D2-D3 16 mm - α 60°	L2 35,5 mm - D2-D3 16 mm - α 75°	L2 33 mm - D2-D3 16 mm - α 90°	L2 46 mm - D2-D3 16 mm - α 60°	L2 40 mm - D2-D3 25 mm / 10 mm - α 60°	L2 36 mm - D2-D3 16 mm / 10 mm - α 60°	L2 39 mm - D2-D3 20 mm / 16 mm - α 60°	2
C050/3	€ 184,80	L2 48 mm - D2-D3 20 mm - α 60°	L2 43,5 mm - D2-D3 20 mm - α 75°	L2 40,5 mm - D2-D3 20 mm - α 90°	L2 56 mm - D2-D3 18 mm - α 60°	L2 50 mm - D2-D3 35 mm / 15 mm - α 60°	L2 42 mm - D2-D3 22 mm / 18 mm - α 60°	L2 48 mm - D2-D3 35 mm / 30 mm - α 60°	3
C050/4	€ 268,80	L2 61,5 mm - D2-D3 28 mm - α 60°	L2 55,5 mm - D2-D3 28 mm - α 75°	L2 51,5 mm - D2-D3 28 mm - α 90°	L2 73 mm - D2-D3 26 mm - α 60°	L2 61,5 mm - D2-D3 55 mm / 30 mm - α 60°	L2 55 mm - D2-D3 40 mm / 35 mm - α 60°	L2 60 mm - D2-D3 55 mm / 48 mm - α 60°	4

C055-

TUBE ROTARY LIVE CENTER

Art.	€	MT	Ø	Length	Speeds
C055/3	€ 197,12	3	30 ÷ 100 mm	170 mm	max 2500 rpm
C055/4	€ 278,88	4	40 ÷ 160 mm	230 mm	max 1600 rpm
C055/5	€ 390,88	5	66 ÷ 200 mm	260 mm	max 1500 rpm



C053-

CARBIDE TIPPED DEAD CENTER

Art.	€	MT	Carbide center max	Length
C053/2	€ 17,92	2 - 60°	Ø 8 mm	100 mm
C053/3	€ 19,82	3 - 60°	Ø 11 mm	125 mm
C053/4	€ 29,23	4 - 60°	Ø 13 mm	160 mm
C053/5	€ 45,36	5 - 60°	Ø 17 mm	200 mm



ST45-

PRECISION MORSE TAPER REDUCTION SLEEVE



Art.	€	MT
ST45/2/1	€ 10,64	2/1
ST45/3/1	€ 12,99	3/1
ST45/3/2	€ 13,89	3/2
ST45/4/1	€ 17,92	4/1
ST45/4/2	€ 17,92	4/2
ST45/4/3	€ 17,92	4/3
ST45/5/3	€ 28,56	5/3
ST45/5/4	€ 28,56	5/4

A001-

PRECISION DRILL CHUCK SHANK



Art.	€	MT	B
A001/2/12	€ 8,51	2	12 mm
A001/2/16	€ 9,63	2	16 mm
A001/2/18	€ 9,97	2	18 mm
A001/3/12	€ 14,90	3	12 mm
A001/3/16	€ 14,90	3	16 mm
A001/3/18	€ 14,90	3	18 mm
A001/3/22	€ 14,90	3	22 mm
A001/4/16	€ 17,92	4	16 mm
A001/4/18	€ 17,92	4	18 mm
A001/4/22	€ 17,92	4	22 mm

E002-

DRIFT SLEEVES



Art.	€	MT
E002/12	€ 7,39	1-2
E002/3	€ 7,39	3
E002/4	€ 10,64	4

ST45-xL

EXTENDED MORSE TAPER ADAPTERS



Art.	€	MT	L	l	D	Weight
ST45/2/1L	€ 16,80	2/1	160 mm	85 mm	20 mm	0.00 kg
ST45/2/2L	€ 20,50	2/2	175 mm	100 mm	30 mm	0.00 kg
ST45/2/3L	€ 23,30	2/3	196 mm	121 mm	36 mm	0.00 kg
ST45/3/1L	€ 21,95	3/1	175 mm	81 mm	20 mm	0.00 kg
ST45/3/2L	€ 23,30	3/2	194 mm	100 mm	30 mm	0.00 kg
ST45/3/3L	€ 32,70	3/3	215 mm	121 mm	36 mm	0.00 kg
ST45/3/4L	€ 42,00	3/4	240 mm	146 mm	48 mm	0.00 kg
ST45/4/1L	€ 34,05	4/1	200 mm	82,5 mm	20 mm	0.00 kg
ST45/4/2L	€ 35,06	4/2	215 mm	97,5 mm	30 mm	0.00 kg
ST45/4/3L	€ 42,45	4/3	240 mm	122,5 mm	36 mm	0.00 kg
ST45/4/4L	€ 47,15	4/4	265 mm	147,5 mm	48 mm	0.00 kg
ST45/4/5L	€ 67,65	4/5	300 mm	182,5 mm	63 mm	0.00 kg
ST45/5/1L	€ 55,10	5/1	232 mm	82,5 mm	20 mm	0.00 kg
ST45/5/2L	€ 56,00	5/2	247 mm	97,5 mm	30 mm	0.00 kg
ST45/5/3L	€ 56,00	5/3	268 mm	118,5 mm	36 mm	0.00 kg
ST45/5/4L	€ 63,50	5/4	300 mm	150,5 mm	48 mm	0.00 kg
ST45/5/5L	€ 92,85	5/5	335 mm	185,5 mm	63 mm	0.00 kg
ST45/5/6L	€ 159,04	5/6	396 mm	247 mm	82 mm	0.00 kg

CAT. 42

M050-

KEYLESS CHUCK



Art.	€	Capacity	Shank
M050/10	€ 11,98	1 ÷ 10 mm	3/8 24 UNF
M050/13	€ 14,67	2 ÷ 13 mm	1/2 20 UNF

M080/10

€ 16,58

KEYLESS CHUCK WITH LOCK



Capacity	0,8 ÷ 10 mm
Shank	3/8 24 UNF

M080/13

€ 17,92

KEYLESS CHUCK WITH LOCK



Capacity	2 ÷ 13 mm
Shank	1/2 20 UNF

M051-

HIGH PRECISION 3 JAWS KEYLESS DRILL CHUCK



Art.	€	Capacity	Taper DIN	Dimension	Dimension
M051/08	€ 52,30	0,5 ÷ 8 mm	B 12	Ø 39 mm	80h mm
M051/10	€ 52,30	1 ÷ 10 mm	B 12	Ø 44,5 mm	82h mm
M051/13	€ 61,38	1 ÷ 13 mm	B 16	Ø 49,5 mm	91h mm
M051/16	€ 74,03	1 ÷ 16 mm	B 18	Ø 54 mm	102,5h mm
M051/20	€ 95,20	1 ÷ 20 mm	B 22	Ø 59 mm	119h mm

FD0x-

MOUNTING WITH STUD

WITH ROUGHLY MACHINE CHUCK SIDE

Art.	€	Cam lock Type	Size	Thickness	Pins
FD04/200	€ 184,80	4"	Ø 200 mm	28 mm	Ø 15,9 mm
FD05/200	€ 184,80	5"	Ø 200 mm	30 mm	Ø 19 mm
FD05/250	€ 254,24	5"	Ø 250 mm	30 mm	Ø 19 mm
FD06/250	€ 259,84	6"	Ø 250 mm	30 mm	Ø 22 mm
FD06/380	€ 344,96	6"	Ø 400 mm	30 mm	Ø 22 mm
FD08/250	€ 262,08	8"	Ø 250 mm	30 mm	Ø 25,4 mm
FD08/320	€ 301,28	8"	Ø 320 mm	30 mm	Ø 25,4 mm
FD08/380	€ 458,08	8"	Ø 400 mm	30 mm	Ø 25,4 mm
FD08/500	€ 527,52	8"	Ø 500 mm	36 mm	Ø 25,4 mm
FD11/320	€ 319,20	11"	Ø 320 mm	30 mm	Ø 30,0 mm
FD11/400	€ 439,04	11"	Ø 400 mm	30 mm	Ø 30,0 mm
FD11/500	€ 561,12	11"	Ø 500 mm	36 mm	Ø 30 mm



M059-

REVERSIBLE TAPPING CHUCK WITH ADJUSTABLE CLUTCH



Art.	€	Tapping range	Dimensions w/o MT	MT	Shank	Weight
M059/07	€ 453,60	M 2 - 7	Ø 55 x 130h mm	2	B16	2 kg
M059/12	€ 519,68	M 5 - 12	Ø 75 x 162h mm	3	B16	2,75 kg
M059/20	€ 636,16	M 8 - 20	Ø 91 x 204h mm	4	B22	5 kg

M060-

TAPPING CHUCK

WITH ADJUSTABLE CLUTCH HOLDERS AND AXIAL COMPENSATION, 6 HOLDERS SHANK FOR TAPPING WITH Ø 19 mm, HOLE HOLDERS FOR SQUARE 3,5 X 2,7 mm - 4,5 X 3,4 mm - 6 X 4,9 mm - 8 X 6,2 mm - 10 X 8 mm - 9 X 7 mm



Art.	€	Tapping range	Arbor length with and without holder	MT	Weight
M060/2	€ 418,88	M 3 - 12	213 - 175 - Ø 46 mm	2	3 kg
M060/3	€ 418,88	M 3 - 12	228 - 190 - Ø 46 mm	3	3,2 kg
M060/4	€ 448,00	M 3 - 12	253 - 215 - Ø 46 mm	4	3,6 kg

M004-

HOLE CUTTER SHANK WITH COOLANT SYSTEM AND WELDON SHANK

MT2 HOLE



Art.	€	Spindle taper MT	Total length	Female junction	Weight
M004/2	€ 166,88	2	170,5 mm	Weldom 19,05 mm	0,76 kg
M004/3	€ 166,88	3	190,5 mm	Weldom 19,05 mm	0,95 kg

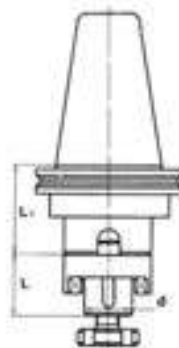
16Ax

ARBOR FOR MILLING CUTTERS

BALANCED CHUCK BODY

DIN 69871/A

Art.	€	ISO	d-h6	L	L1	Balancing rpm
16A40	€ 101,92	40	16 mm	27 mm	35 mm	12000
22A40	€ 101,92	40	22 mm	31 mm	41 mm	12000
27A40	€ 101,92	40	27 mm	33 mm	41 mm	12000
32A40	€ 113,12	40	32 mm	38 mm	45 mm	12000
16A50	€ 141,12	50	16 mm	27 mm	35 mm	12000
22A50	€ 141,12	50	22 mm	31 mm	35 mm	12000
27A50	€ 141,12	50	27 mm	33 mm	35 mm	12000
32A50	€ 151,20	50	32 mm	38 mm	40 mm	12000
40A50	€ 164,64	50	40 mm	41 mm	40 mm	12000



4-

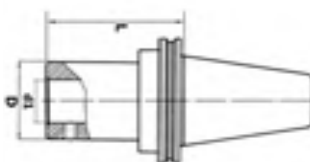
WELDON SHANK TOOL HOLDER

BALANCED CHUCK BODY

DIN 69871/A

Art.	€	ISO	d1 - h6	D	L	Balancing rpm
4/06A40	€ 82,88	40	6 mm	25 mm	60 mm	12000
4/08A40	€ 82,88	40	8 mm	28 mm	60 mm	12000
4/10A40	€ 82,88	40	10 mm	35 mm	50 mm	12000
4/12A40	€ 82,88	40	12 mm	42 mm	60 mm	12000
4/14A40	€ 82,88	40	14 mm	42 mm	70 mm	12000
4/16A40	€ 82,88	40	16 mm	48 mm	70 mm	12000
4/18A40	€ 82,88	40	18 mm	48 mm	70 mm	12000
4/20A40	€ 82,88	40	20 mm	52 mm	63 mm	12000
4/25A40	€ 82,88	40	25 mm	40 mm	100 mm	12000
4/32A40	€ 82,88	40	32 mm	72 mm	100 mm	12000
4/06A50	€ 114,24	50	6 mm	25 mm	65 mm	12000
4/08A50	€ 114,24	50	8 mm	28 mm	65 mm	12000

Art.	€	ISO	d1 - h6	D	L	Balancing rpm
4/10A50	€ 114,24	50	10 mm	35 mm	70 mm	12000
4/12A50	€ 114,24	50	12 mm	42 mm	75 mm	12000
4/14A50	€ 114,24	50	14 mm	42 mm	75 mm	12000
4/16A50	€ 114,24	50	16 mm	48 mm	80 mm	12000
4/18A50	€ 114,24	50	18 mm	48 mm	80 mm	12000
4/20A50	€ 114,24	50	20 mm	52 mm	80 mm	12000
4/25A50	€ 120,96	50	25 mm	65 mm	100 mm	12000
4/32A50	€ 120,96	50	32 mm	72 mm	105 mm	12000
4/40A50	€ 131,04	50	40 mm	80 mm	120 mm	12000



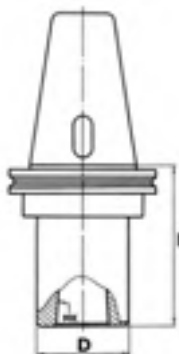
1-xA

MORSE TAPER ADAPTER

BALANCED CHUCK BODY

DIN 69871/A

Art.	€	ISO	MT	D	L	Balancing rpm
1/1A40	€ 89,94	40	1	25 mm	45 mm	12000
1/2A40	€ 89,94	40	2	32 mm	60 mm	12000
1/3A40	€ 89,94	40	3	40 mm	75 mm	12000
1/4A40	€ 89,94	40	4	50 mm	98 mm	12000
1/2A50	€ 132,16	50	2	32 mm	40 mm	12000
1/3A50	€ 132,16	50	3	40 mm	50 mm	12000
1/4A50	€ 142,24	50	4	48 mm	95 mm	12000
1/5A50	€ 173,60	50	5	63 mm	110 mm	12000



2-xA

MORSE TAPER ADAPTER WITH THREAD

BALANCED CHUCK BODY

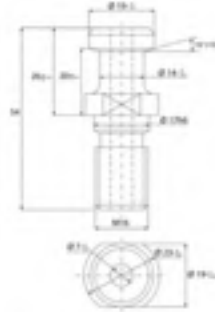
DIN 69871/A

Art.	€	ISO	MT	D	L	Balancing rpm
2/1A40	€ 114,24	40	1	25 mm	45 mm	12000
2/2A40	€ 114,24	40	2	32 mm	60 mm	12000
2/3A40	€ 114,24	40	3	40 mm	75 mm	12000
2/4A40	€ 114,24	40	4	50 mm	98 mm	12000
2/2A50	€ 141,12	50	2	32 mm	40 mm	12000
2/3A50	€ 141,12	50	3	40 mm	50 mm	12000
2/4A50	€ 160,16	50	4	50 mm	80 mm	12000
2/5A50	€ 189,28	50	5	63 mm	110 mm	12000



TIPAx

TIP



DIN 69871/A

Art.	€	ISO
TIPA40	€ 16,91	40
TIPA50	€ 17,92	50

4-xD

WELDON SHANK TOOL HOLDER

BALANCED CHUCK BODY

MAS - 403 BT

Art.	€	BT	d1 - h6	D	L	Balancing rpm
4/06D40	€ 89,94	40	6 mm	25 mm	60 mm	12000
4/08D40	€ 89,94	40	8 mm	28 mm	60 mm	12000
4/10D40	€ 89,94	40	10 mm	35 mm	60 mm	12000
4/12D40	€ 89,94	40	12 mm	42 mm	70 mm	12000
4/14D40	€ 89,94	40	14 mm	42 mm	70 mm	12000
4/16D40	€ 89,94	40	16 mm	48 mm	70 mm	12000
4/18D40	€ 89,94	40	18 mm	48 mm	70 mm	12000
4/20D40	€ 89,94	40	20 mm	52 mm	75 mm	12000
4/25D40	€ 89,94	40	25 mm	63 mm	100 mm	12000
4/32D40	€ 89,94	40	32 mm	72 mm	100 mm	12000
4/06D50	€ 118,72	50	6 mm	25 mm	65 mm	12000
4/08D50	€ 118,72	50	8 mm	28 mm	65 mm	12000
4/10D50	€ 118,72	50	10 mm	35 mm	70 mm	12000
4/12D50	€ 118,72	50	12 mm	42 mm	75 mm	12000
4/14D50	€ 118,72	50	14 mm	42 mm	75 mm	12000
4/16D50	€ 118,72	50	16 mm	48 mm	80 mm	12000
4/18D50	€ 118,72	50	18 mm	48 mm	80 mm	12000



Art.	€	BT	d1 - h6	D	L	Balancing rpm
4/20D50	€ 118,72	50	20 mm	52 mm	80 mm	12000
4/25D50	€ 132,16	50	25 mm	65 mm	100 mm	12000
4/32D50	€ 132,16	50	32 mm	72 mm	105 mm	12000
4/40D50	€ 132,16	50	40 mm	80 mm	120 mm	12000

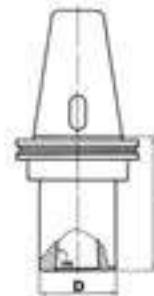
1-xD

MORSE TAPER ADAPTER

BALANCED CHUCK BODY

MAS - 403 BT

Art.	€	BT	MT	D	L	Balancing rpm
1/1D40	€ 89,94	40	1	25 mm	45 mm	12000
1/2D40	€ 89,94	40	2	32 mm	60 mm	12000
1/3D40	€ 89,94	40	3	40 mm	75 mm	12000
1/4D40	€ 90,38	40	4	50 mm	98 mm	12000
1/2D50	€ 132,16	50	2	32 mm	40 mm	12000
1/3D50	€ 132,16	50	3	40 mm	75 mm	12000
1/4D50	€ 146,72	50	4	50 mm	80 mm	12000
1/5D50	€ 173,60	50	5	63 mm	110 mm	12000



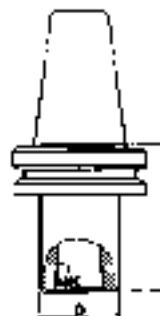
2-xD

MORSE TAPER ADAPTER WITH THREAD

BALANCED CHUCK BODY

MAS - 403 BT

Art.	€	BT	MT	D	L	Balancing rpm
2/1D40	€ 109,09	40	1	25 mm	45 mm	12000
2/2D40	€ 109,09	40	2	32 mm	60 mm	12000
2/3D40	€ 109,09	40	3	40 mm	75 mm	12000
2/4D40	€ 114,24	40	4	50 mm	98 mm	12000
2/2D50	€ 145,60	50	2	32 mm	40 mm	12000
2/3D50	€ 145,60	50	3	40 mm	75 mm	12000
2/4D50	€ 169,12	50	4	50 mm	80 mm	12000
2/5D50	€ 191,52	50	5	63 mm	110 mm	12000



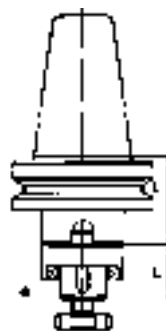
16-D

ARBOR FOR MILLING CUTTER

BALANCED CHUCK BODY

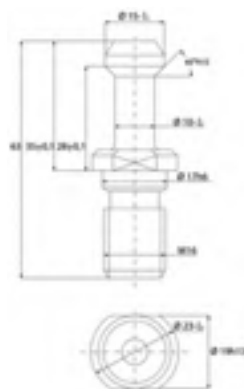
MAS - 403 BT

Art.	€	BT	d - h6	L	L1	Balancing rpm
16/D40	€ 101,92	40	16 mm	27 mm	35 mm	12000
22/D40	€ 101,92	40	22 mm	31 mm	35 mm	12000
27/D40	€ 101,92	40	27 mm	33 mm	35 mm	12000
32/D40	€ 113,12	40	32 mm	38 mm	40 mm	12000
16/D50	€ 142,24	50	16 mm	27 mm	35 mm	12000
22/D50	€ 142,24	50	22 mm	31 mm	35 mm	12000
27/D50	€ 152,32	50	27 mm	33 mm	35 mm	12000
32/D50	€ 152,32	50	32 mm	38 mm	40 mm	12000
40/D50	€ 162,40	50	40 mm	41 mm	40 mm	12000



TIPDx

TIP



MAS - 403 BT

Art.	€	ISO
TIPD40	€ 16,91	40
TIPD50	€ 17,92	50

2-xB

MORSE TAPER ADAPTER WITH THREAD

BALANCED CHUCK BODY

DIN 2080

Art.	€	ISO	MT	D	L	Balancing rpm
2/1B40	€ 109,09	40	1	25 mm	50 mm	2000
2/2B40	€ 109,09	40	2	32 mm	30 mm	2000
2/3B40	€ 109,09	40	3	40 mm	64 mm	2000
2/4B40	€ 122,08	40	4	50 mm	94 mm	2000
2/2B50	€ 146,72	50	2	32 mm	60 mm	2000
2/3B50	€ 146,72	50	3	40 mm	30 mm	2000
2/4B50	€ 160,16	50	4	50 mm	65 mm	2000
2/5B50	€ 174,72	50	5	63 mm	105 mm	2000



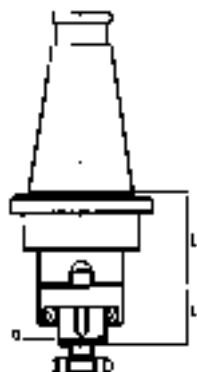
16-B

ARBOR FOR MILLING CUTTERS

BALANCED CHUCK BODY

DIN 2080

Art.	€	ISO	d - h6	L	L1	Balancing rpm
16/B40	€ 112,00	40	16 mm	27 mm	35 mm	2000
22/B40	€ 112,00	40	22 mm	31 mm	39 mm	2000
27/B40	€ 112,00	40	27 mm	33 mm	40 mm	2000
32/B40	€ 112,00	40	32 mm	38 mm	40 mm	2000
16/B50	€ 135,52	50	16 mm	27 mm	35 mm	2000
22/B50	€ 135,52	50	22 mm	31 mm	35 mm	2000
27/B50	€ 135,52	50	27 mm	33 mm	35 mm	2000
32/B50	€ 145,60	50	32 mm	38 mm	40 mm	2000
40/B50	€ 156,80	50	40 mm	41 mm	40 mm	2000



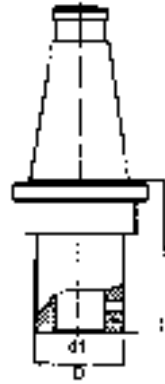
4-xB

WELDON SHANK TOOL HOLDER

BALANCED CHUCK BODY

MAS - 403 BT

Art.	€	ISO	d1 - h6	D	L	Balancing rpm
4/06B40	€ 89,94	40	6 mm	25 mm	50 mm	2000
4/08B40	€ 89,94	40	8 mm	28 mm	50 mm	2000
4/10B40	€ 89,94	40	10 mm	35 mm	50 mm	2000
4/12B40	€ 89,94	40	12 mm	42 mm	50 mm	2000
4/16B40	€ 89,94	40	16 mm	48 mm	63 mm	2000
4/18B40	€ 89,94	40	18 mm	48 mm	50 mm	2000
4/20B40	€ 89,94	40	20 mm	52 mm	63 mm	2000
4/25B40	€ 89,94	40	25 mm	65 mm	100 mm	2000
4/32B40	€ 89,94	40	32 mm	72 mm	80 mm	2000
4/06B50	€ 120,96	50	6 mm	25 mm	50 mm	2000
4/08B50	€ 120,96	50	8 mm	28 mm	50 mm	2000
4/10B50	€ 120,96	50	10 mm	35 mm	50 mm	2000
4/12B50	€ 120,96	50	12 mm	42 mm	50 mm	2000
4/16B50	€ 120,96	50	16 mm	48 mm	50 mm	2000



Art.	€	ISO	d1 - h6	D	L	Balancing rpm
4/20B50	€ 132,16	50	20 mm	52 mm	63 mm	2000
4/25B50	€ 132,16	50	25 mm	65 mm	80 mm	2000
4/32B50	€ 132,16	50	32 mm	72 mm	80 mm	2000
4/40B50	€ 142,24	50	40 mm	90 mm	90 mm	2000

S007-

0° ÷ 90° TILTING TOOL

TIGHTENING FIXTURE

DIN 2080, DIN 69871, MAS BT - TC

Art.	€	Taper	HSK
S007/30	€ 210,56	30 ISO	-
S007/40	€ 213,92	40 ISO	63
S007/50	€ 239,68	50 ISO	100



S014-

CHUCK HOLDER

VERTICAL AND HORIZONTAL FOR BT 40 AND ISO 40. IT'S A SMART DEVICE TO SET THE CHUCK FOR CNC MACHINES

Art.	€	Chuck sizes	Weight
S014/40BT	€ 74,03	BT 40 ISO 40	3,8 kg
S014/40DIN	€ 74,03	DIN 69871.40 ISO 40	3,8 kg
S014/50BT	€ 168,00	BT 50 ISO 50	11,4 kg
S014/50DIN	€ 168,00	DIN 69871.50 ISO 50	11,4 kg

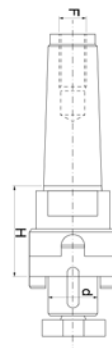


16-CM

TAPER SHANK SHELL END MILL ADAPTER

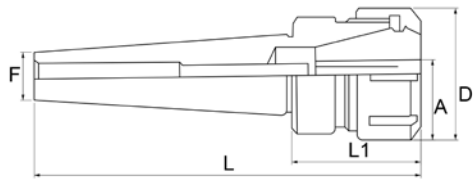
DIN 228/A

Art.	€	d - h6	MT	F	H
16/CM3	€ 87,81	16 mm	3	M 12	40 mm
16/CM4	€ 87,81	16 mm	4	M 16	55 mm
22/CM3	€ 87,81	22 mm	3	M 12	50 mm
22/CM4	€ 87,81	22 mm	4	M 16	55 mm
27/CM3	€ 87,81	27 mm	3	M 12	50 mm
27/CM4	€ 87,81	27 mm	4	M 16	55 mm



3-CM

COLLET CHUCK



DIN 228/A

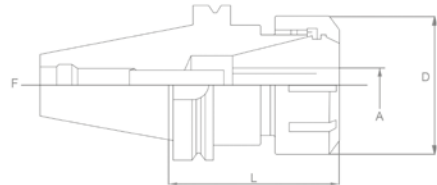
Art.	€	Collets	D	L	L1	F	A
3/CM2	€ 82,88	ER 32	50 mm	135 mm	60 mm	M 10	3 / 20 mm
3/CM3	€ 82,88	ER 32	50 mm	146 mm	60 mm	M 12	3 / 20 mm
3/CM4	€ 93,07	ER 32	50 mm	166 mm	58 mm	M 16	3 / 20 mm



3D40-

COLLET CHUCK

BALANCED CHUCK BODY



MAS - 403 BT

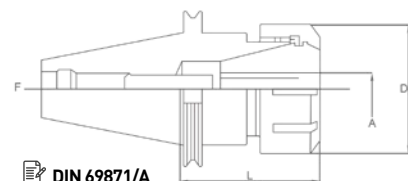
Art.	€	Collets	A	D	L	F	Balancing rpm
3D40/16	€ 66,30	ER 16	1 / 10 mm	28 mm	100 mm	M 16	12000
3D40/20	€ 66,30	ER 20	2 / 13 mm	34 mm	100 mm	M 16	12000
3D40/25	€ 66,30	ER 25	2 / 16 mm	42 mm	100 mm	M 16	12000
3/D/40	€ 104,83	ER 32	3/20 mm	50 mm	63 mm	M 16	12000



3A40-

COLLET CHUCK

BALANCED CHUCK BODY



DIN 69871/A

Art.	€	Collets	A	D	L	F	Balancing rpm
3A40/16	€ 66,30	ER 16	1 / 10 mm	28 mm	100 mm	M 16	12000
3A40/20	€ 66,30	ER 20	2 / 13 mm	34 mm	100 mm	M 16	12000
3A40/25	€ 66,30	ER 25	2 / 16 mm	42 mm	100 mm	M 16	12000
3/A/40	€ 104,83	ER 32	3/20 mm	50 mm	72 mm	M 16	12000



3/B/40

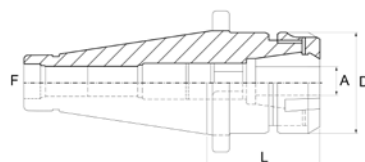
COLLET CHUCK

BALANCED CHUCK BODY

€ 96,66

DIN 2080

Collets	ER 32
A	3/20 mm
D	50 mm
L	65 mm
F	M 16
Balancing rpm	2000



PR16/10P

€ 81,76

ER16 SPRING COLLET SET



10 Pcs

Sizes \varnothing 1-2-3-4-5-6-7-8-9-10 mm
Weight 0.5 kg

PR20/12P

€ 91,28

ER20 SPRING COLLET SET



12 Pcs

Sizes \varnothing 2-3-4-5-6-7-8-9-10-11-12-13 mm
Weight 0.9 kg

PR25/15P

€ 119,84

ER25 SPRING COLLET SET



15 Pcs

Sizes \varnothing 2-3-4-5-6-7-8-9-10-11-12-13-14-15-16 mm
Weight 1.68 kg

P032/7P

€ 110,54

ER32 SPRING COLLET SET



7 Pcs

Sizes 4-6-8-10-12-16-20 mm
Weight 1,1 kg

P032/18P

€ 230,72

ER32 SPRING COLLET SET



18 Pcs

Sizes 3-4-5-6-7-8-9-10-11-12-13-14-15-16-17-18-19-20 mm
Weight 3 kg

G0x

SPARE RING

Art.	€
G016	€ 8,85
G020	€ 9,74
G025	€ 13,33
G032	€ 33,38



CHERx

LOCK RING DRIVING KEY

Art.	€
CHER25	€ 14,22
CHER32	€ 18,14

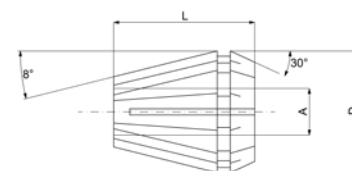


P032-

SPRING COLLET

ER 32

Art.	€	Capacity A	D	L
P032/03	€ 13,44	2-3 mm	33 mm	40 mm
P032/04	€ 13,44	3-4 mm	33 mm	40 mm
P032/05	€ 13,44	4-5 mm	33 mm	40 mm
P032/06	€ 13,44	5-6 mm	33 mm	40 mm
P032/07	€ 13,44	6-7 mm	33 mm	40 mm
P032/08	€ 13,44	7-8 mm	33 mm	40 mm
P032/09	€ 13,44	8-9 mm	33 mm	40 mm
P032/10	€ 13,44	9-10 mm	33 mm	40 mm
P032/11	€ 13,44	10-11 mm	33 mm	40 mm



Art.	€	Capacity A	D	L
P032/12	€ 13,44	11-12 mm	33 mm	40 mm
P032/13	€ 13,44	12-13 mm	33 mm	40 mm
P032/14	€ 13,44	13-14 mm	33 mm	40 mm
P032/15	€ 13,44	14-15 mm	33 mm	40 mm
P032/16	€ 13,44	15-16 mm	33 mm	40 mm
P032/17	€ 13,44	16-17 mm	33 mm	40 mm
P032/18	€ 13,44	17-18 mm	33 mm	40 mm
P032/19	€ 13,44	18-19 mm	33 mm	40 mm
P032/20	€ 13,44	19-20 mm	33 mm	40 mm

COMPATIBILITY CHART

Art.	€	3/CM2	3/CM3	3/CM4	3/D/40	3/B/40	3/A/40	3A40/16	3A40/20	3A40/25	3D40/16	3D40/20	3D40/25	PAG
P032/03	13,44	•	•	•	•	•	•							167
P032/04	13,44	•	•	•	•	•	•							167
P032/05	13,44	•	•	•	•	•	•							167
P032/06	13,44	•	•	•	•	•	•							167
P032/07	13,44	•	•	•	•	•	•							167
P032/08	13,44	•	•	•	•	•	•							167
P032/09	13,44	•	•	•	•	•	•							167
P032/10	13,44	•	•	•	•	•	•							167
P032/11	13,44	•	•	•	•	•	•							167
P032/12	13,44	•	•	•	•	•	•							167
P032/13	13,44	•	•	•	•	•	•							167
P032/14	13,44	•	•	•	•	•	•							167
P032/15	13,44	•	•	•	•	•	•							167
P032/16	13,44	•	•	•	•	•	•							167
P032/17	13,44	•	•	•	•	•	•							167

Art.	€	3/CM2	3/CM3	3/CM4	3/D/40	3/B/40	3/A/40	3A40/16	3A40/20	3A40/25	3D40/16	3D40/20	3D40/25	PAG
P032/18	13,44	•	•	•	•	•	•							167
P032/19	13,44	•	•	•	•	•	•							167
P032/20	13,44	•	•	•	•	•	•							167
P032/7P	110,54	•	•	•	•	•	•							167
P032/18P	230,72	•	•	•	•	•	•							167
G032	33,38	•	•	•	•	•	•							167
CHER32	18,14	•	•	•	•	•	•							167
PR16/10P	81,76							•			•			166
PR20/12P	91,28								•			•		167
PR25/15P	119,84									•			•	167
G016	8,85							•			•			167
G020	9,74								•			•		167
G025	13,33									•			•	167
CHER25	14,22									•			•	167

P450

€ 498,40

TOOL ROLLING CABINET KIT
WITH 20 ISO50 TOOL HOLDERS

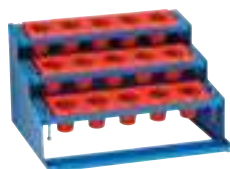


Overall sizes 950 x 650 x 830h mm
Weight 35 kg

P350

€ 173,60

TOOL ROLLING CABINET KIT
FRAME WITH 15 ISO50 TOOL HOLDERS



Overall sizes 600 x 500 x 350h mm
Weight 13 kg

PC50

€ 47,71

TOOL HOLDER SHELVES
WITH 5 ISO50 TOOL HOLDER



Overall sizes 600 x 145 mm

PC50/R

€ 50,51

TOOL HOLDER SET
ISO50



10 Pcs

Overall sizes 136 x 102 mm

P4CS

€ 18,82

COUPLE OF SUPPORTS
FOR TOOL ROLLING CABINET



P440

€ 448,00

TOOL ROLLING CABINET KIT
WITH 28 TOOL HOLDERS



Overall sizes 950 x 650 x 830h mm
Weight 35 kg

P340

€ 179,20

TABLE TOOL RACK KIT
FRAME WITH 21 ISO40 TOOL HOLDERS



Overall sizes 600 x 500 x 350h mm
Weight 13 kg

PC40

€ 47,71

TOOL HOLDER SHELVES
WITH 7 ISO40 TOOL HOLDERS



Overall sizes 600 x 145 mm

PC40/R

€ 47,04

TOOL HOLDER SET
ISO40



10 Pcs

Overall sizes 136 x 72 mm

PC4P

€ 20,16

4 FEET SET
FOR TOOL HOLDER SHELF



T010-

PRECISION BORING HEAD

TOOL KIT NOT INCLUDED



Art.	€	Boring head body	Shank	Tools	Max offset	A	Weight
T010/5003	€ 248,64	Ø 50 mm	CM/MT3-DIN228A	Ø 12 mm	15 mm	75 mm	1,2 kg
T010/5004	€ 248,64	Ø 50 mm	CM/MT4-DIN228A	Ø 12 mm	15 mm	75 mm	1,8 kg
T010/5040	€ 248,64	Ø 50 mm	ISO 40-DIN2080	Ø 12 mm	15 mm	81 mm	1,9 kg
T010/7540	€ 248,64	Ø 75 mm	ISO 40-DIN2080	Ø 18 mm	25 mm	99 mm	3,2 kg

T021-

AUTOMATIC PRECISION BORING HEAD



Art.	€		T021/030 T021/030CM3	T021/050	T021/100 T021/100/50
T021/030	€ 1780,80				
T021/030CM3	€ 1780,80				
T021/050	€ 2072,00				
T021/100	€ 2396,80				
T021/100/50	€ 2396,80				
		Max facing and boring ø	150 mmv	350 mm	450 mm
		Max stroke of slide	± 15 mm	± 25 mm	± 50 mm
		Fine feed per graduation	0,005 mm	0,005 mm	0,005 mm
		Manual feed per revolution	2 mm	3 mm	3 mm
		Self acting feed per revolution	0,02-0,04-0,06 0,08-0,10-0,12 mm	0,03-0,06-0,09 0,12-0,15-0,18 mm	0,03-0,06-0,09 0,12-0,15-0,18 mm
		ø of tool post holes in head	18 mm	22 mm	22 mm
		Max ø of head	90 mm	120 mm	168 mm
		Height of head without shank - (H)	87,5 mm	118 mm	118 mm
		Weight of head without shank	2,9 kg	6,1 kg	7,8 kg
		Length of sliding block	75 mm	105 mm	160 mm
		Width of sliding block	70 mm	90 mm	90 mm
		Collets hole	4 - 8 - 12 mm	8 - 10 - 12 - 14 mm	8 - 10 - 12 - 14 mm
		Accessories	1 - 2 - 6	1 - 2 - 3 - 4 - 5	1 - 2 - 3 - 4 - 5
		Extension hole for tool holder	Ø 6 mm	Ø 10 mm	Ø 10 mm

B001-

SOLID BORING BAR SET FOR PRECISION BORING HEADS



Art.	€	Suitable	Shank	Length	Insert (not included)
B001/12	€ 115,36	T010/50	12 ø mm	60 mm	TCMT110204N
B001/18	€ 115,36	T010/75	18 ø mm	99 mm	TCMT110204N